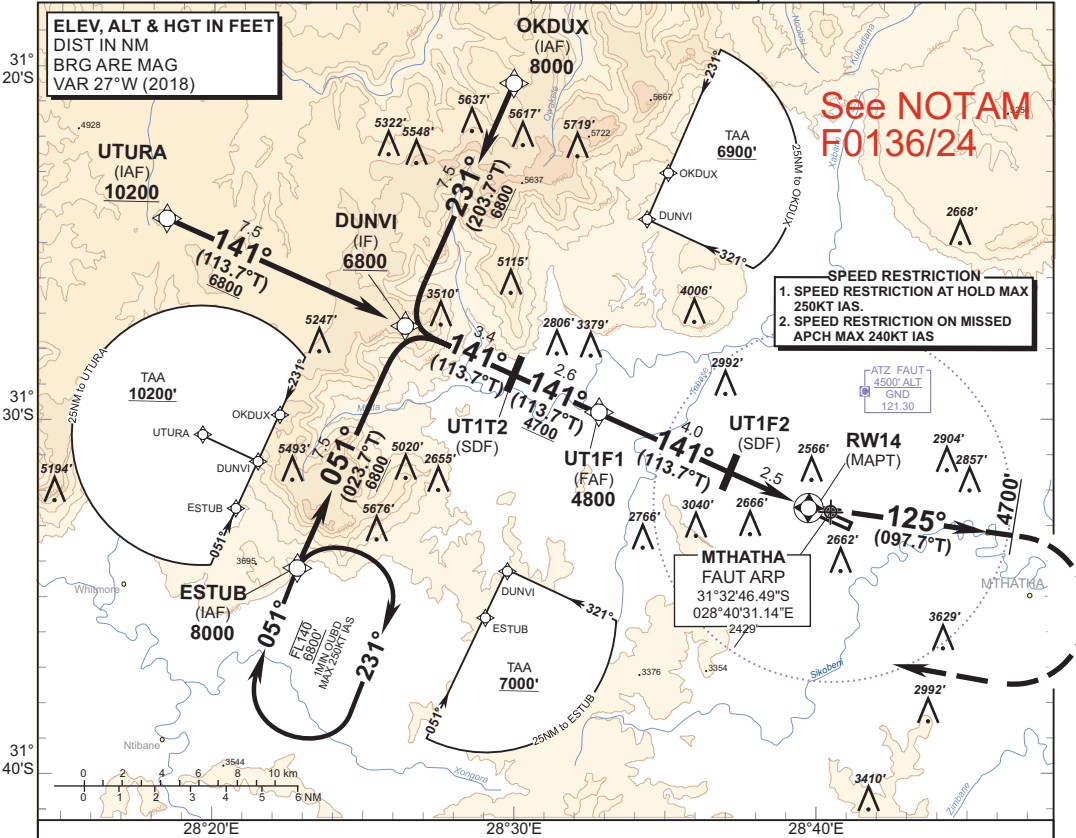


INSTRUMENT AERODROME ELEV 2429'
APPROACH CHART HEIGHTS RELATED TO
THR RWY 14 - ELEV 2380'

MTHATHA TWR 121.30

MTHATHA
 (K.D. MATANZIMA)
RNAV (GNSS) RWY 14
 CAT A - D



See NOTAM F0136/24

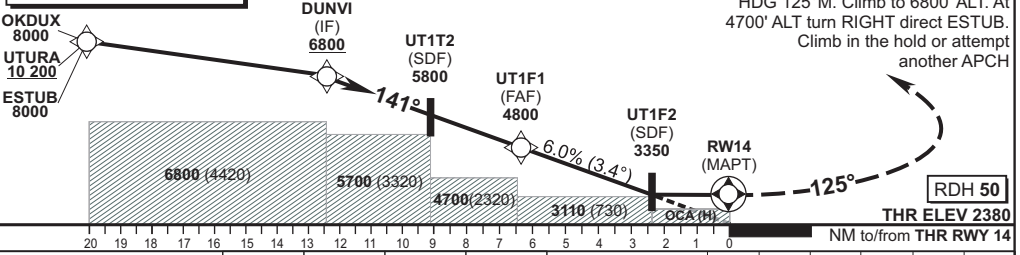
SPEED RESTRICTION
 1. SPEED RESTRICTION AT HOLD MAX 250KT IAS.
 2. SPEED RESTRICTION ON MISSED APCH MAX 240KT IAS

MTHATHA FAUT ARP
 31°32'46.49°S
 028°40'31.14°E

| | | | | | | | | |
|--------------------|------------|------------|------------|------------|-----------|-----------|--|--|
| DIST (NM) to RW14 | 6 | 5 | 4 | 3 | UT1F2 | 2 | | |
| ADVISORY ALT (HGT) | 4630(2250) | 4270(1890) | 3900(1520) | 3530(1150) | 3350(970) | 3170(790) | | |

TRANSITION ALT 7500
TRANSITION LEVEL ATC

MISSED APPROACH:
 Max 240KT IAS. At RW14 turn LEFT HG 125°M. Climb to 6800' ALT. At 4700' ALT turn RIGHT direct ESTUB. Climb in the hold or attempt another APCH



RDH 50

THR ELEV 2380

| | | OCA(H) | | | | GS | KT | 80 | 100 | 120 | 140 | 160 | | |
|----------------------|------|---------------------------------|-------------|--------------------------|-------------|------------|------------|--|------|------|------|------|------|-----|
| Straight-in Approach | LNAV | FAUT QNH | With SDF | A | B | C | D | FAF TO MAPT | | | | | | |
| | | | Without SDF | 2840 (460) | 2840 (460) | 2840 (460) | 2840 (460) | M:S | 4:53 | 3:54 | 3:15 | 2:47 | 2:26 | |
| | | | 3350 (970) | 3350 (970) | 3350 (970) | 3350 (970) | 3350 (970) | Rate of descent | FPM | 486 | 608 | 729 | 851 | 972 |
| | | RVR | 1500m | 1500m | 2000m | 2000m | 2000m | GS | KT | 100 | 120 | 150 | 180 | 210 |
| | | 2.5% Missed APCH Climb Gradient | 2870 (441) | 3130 (701) | 3490 (1061) | | | FPM | 253 | 304 | 380 | 456 | 532 | |
| Circling | | HGT related to AD ELEV | | NO CIRCLING SOUTH OF RWY | | | | NOTE: | | | | | | |
| | | | | | | | | 1. Turns prior to RW14 prohibited. | | | | | | |
| | | | | | | | | 2. The procedure is conducted partially outside controlled airspace. | | | | | | |
| | | | | | | | | 3. All circling approaches are entirely at the discretion of the pilot in command. | | | | | | |

CHANGE: Missed APCH Turn Altitude